



- [HOME](#)
- [DESIGNERS](#)
- [ARCHITECTS](#)
- [DIARY](#)
- [GALLERY](#)
- [ICON EVENTS](#)
- [PRODUCTS](#)
- [JOBS](#)



NEWS > Boathouse by Baumschlager & Eberle



words **Beatrice Galilee**

Vienna-based architect Baumschlager & Eberle has designed a boathouse on the edge of a small marina on Lake Constance in Fussach, Austria. This new project stands directly opposite the Rohner harbour office building, a long elegant concrete structure that the firm completed in 2000.

The tall translucent boathouse will be a meeting point for this area's sailing community. Unlike the office building, this will be used day and night and its design reflects that – in the evening its skin glows white and green, revealing its water-ripple concrete structure.

The glazed envelope consists of irregular panes of specially developed glass. The visible concrete structure, reminiscent of Toyo Ito's Tod's Omestessando store in Toyko, shows a more playful side of the Austrian practice more famous for its restrained style.

images © Eduard Hueber

[www.baumschlager-eberle.com](http://www.baumschlager-eberle.com)

Comment on this article



- [CURRENT ISSUE](#)
- [PREVIOUS ISSUES](#)
- [SUBSCRIBE](#)
- [ABOUT ICON](#)
- [WHERE TO BUY ICON](#)
- [READER ENQUIRY](#)

**JOIN OUR NEWSLETTER**

I have read and agree to

Terms & Conditions

Privacy Policy

**MANIFESTOS**

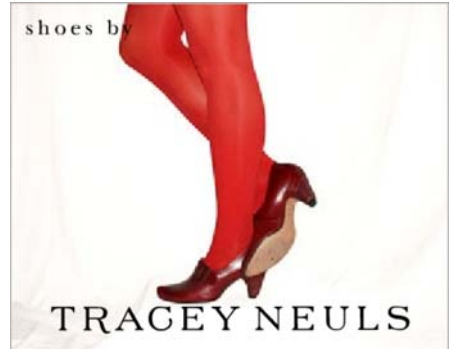
**ICON DESIGN TRAIL**

**DOWNLOADS**

**REVIEWS**

**INTERNSHIPS**

**CONTACT US**





If you enjoyed this article sign up for our newsletter  
Or why not sent this to a friend

**Related Articles**

**Bookmarks**

[Delicious](#)

[Digg](#)

[reddit](#)

[Facebook](#)

[StumbleUpon](#)

[Sitemap](#) [Agent Login](#) [RSS](#) [Terms & Conditions](#) [Privacy Policy](#) [Links](#) [Contact Us](#)  
Iconeye - Website Designed by Media 10 [Careers with us](#) [Advertise on this website](#)